

Town Of Millis - DPW  
Equipment

Date: February 2012

<u>Unit #</u>	<u>Year</u>	<u>Make</u>	<u>Model</u>	<u>Miles or Hours</u>
1	2008	Ford	Explorer	23,900 Miles
2	2004	Chevy 3500	Dump Truck	109,147 Miles
3	2005	International	Dump Truck	17,098 Miles/1,820 Hrs.
4	1995	International	Dump Truck	63,501 Miles/6,397 Hrs.
5	1999	Volvo	Dump Truck	33,733 Miles
6	2005	Volvo L70E	Front End Loader	3,181 Hrs.
8	2008	John Deere	Skidsteer	278 Hrs.
9	1994	John Deere	410D Backhoe	7,546 Hrs.
10	1998	Johnston	Street Sweeper	17,939 Miles/3,136 Hrs.
11	2001	Ford F-450	Utility Truck	121,165 Miles
14	2007	Chevy 3500	Dump Truck	61,644 Miles
17	1978	Ford 2600	Farm Tractor	4,991 Hrs.
18	2004	Chevy 3500	Dump Truck	70,394 Miles
20	1989	Caterpillar	926 Front End Loader	8,134 Hrs.
24	2006	JCB	Backhoe	1,921 Hrs.
27	1994	Mack RD	Tractor	95,607 Miles/7,145 Hrs.
29	2011	Holder 9700	Multi-use	51 Hrs.
30	2007	Chevy 2500	Pickup	79,150 Miles
31	2002	Bobcat	Skidsteer	337 Hrs.
50	2010	Freightliner	Roll-off	15,548 Miles
52	2004	Ford	Crown Victoria	78,640 Miles





Unit #1  
2008  
Ford Explorer





Unit #2  
2004 Chevy 3500  
Dump Truck / With Plow





Unit #3  
2005 International  
Dump Truck / With Plow & Sander





Unit #4  
1995 International  
Dump Truck / With Plow & Sander





Unit #5  
1999 Volvo  
Dump Truck / With Plow & Sander





Unit #6  
2005 Volvo L70E  
Front End Loader / With Plow





Unit #8  
2008 John Deere Multi-use  
Skidsteer / With Plow & Snow Blower





Unit #9  
1994 John Deere  
410D Backhoe





Unit #10  
1998 Johnston  
Street Sweeper





Unit #11  
2001 Ford F-450  
Utility Truck / With Plow



Unit #13  
2012 Chevy 2500  
Pickup Truck / With Plow





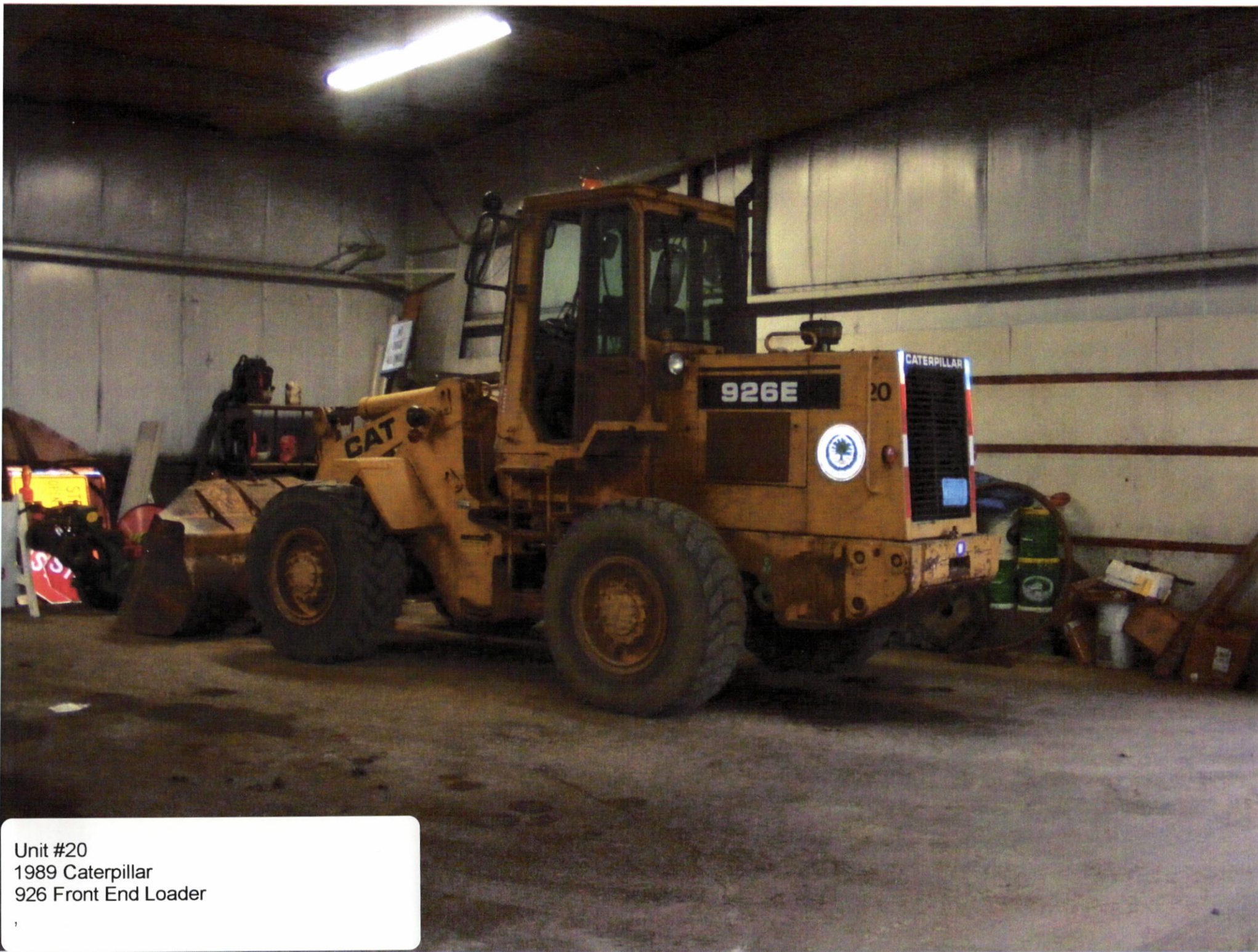
Unit #14  
2007 Chevy 3500  
Dump Truck / With Plow





Unit #18  
2004 Chevy 3500  
Dump Truck / With Plow & Sander





Unit #20  
1989 Caterpillar  
926 Front End Loader





Unit #21  
Year ???? OLD  
Roller





Unit #22

Olathe Chipper





Unit #24  
2006 JCB  
Backhoe





Unit #25

Sullivan Compressor





Unit #27  
1994 Mack RD  
Tractor / With Plow & Sander





Unit #29  
Holder 9700  
Multi-use / With Plow & Sander (sidewalk)





Unit #30  
Chevy 2500  
Pickup / With Plow





Unit #31  
Bobcat  
Skidsteer / With Plow & Snow Blower





Unit #50  
2010 Freightliner  
Roll Off



TOWN OF MILLIS



EMERGENCY RESPONSE

Funded in  
Part by

MIIA

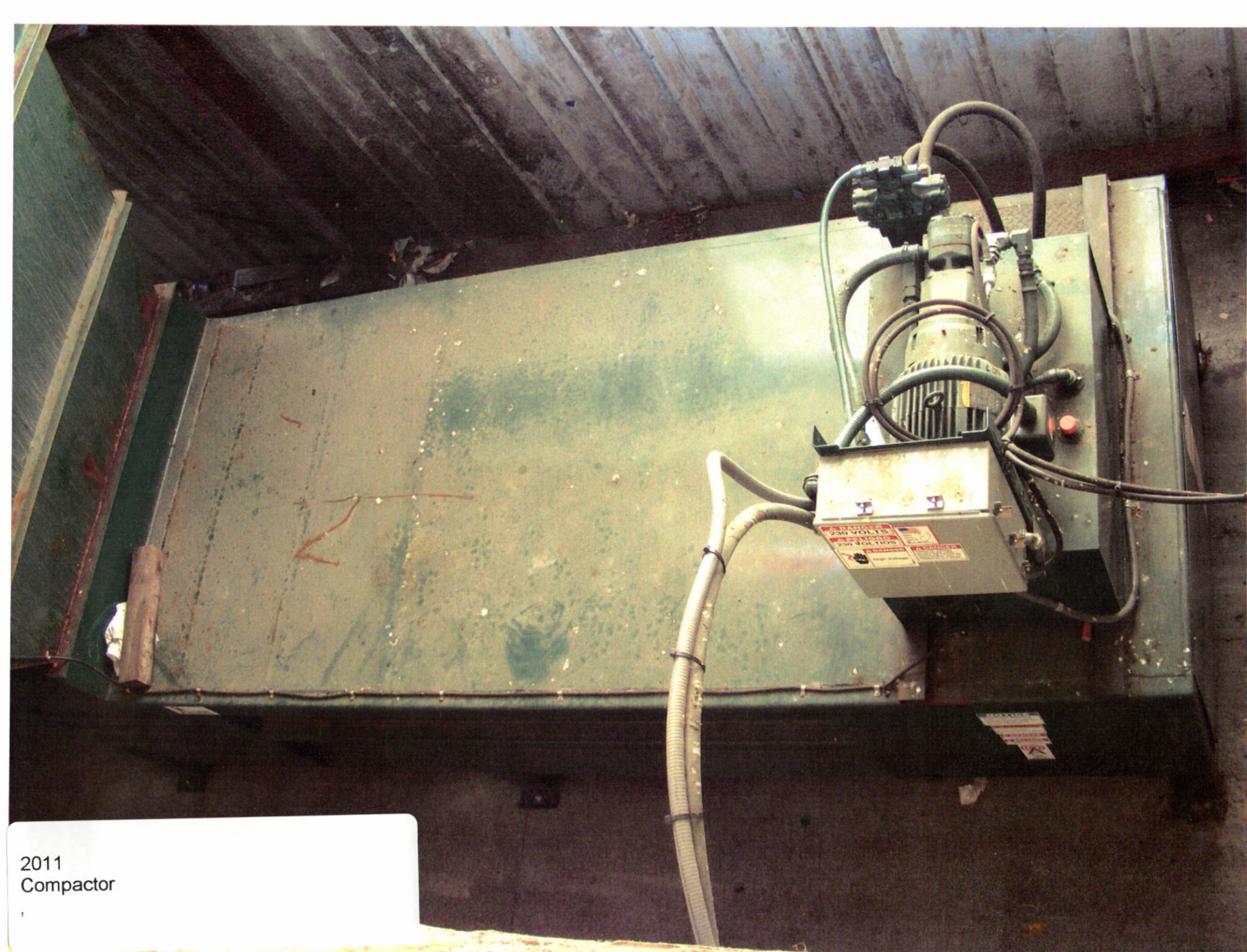
Unit #51  
2010 Trailer  
Emergency Response





Unit #52  
2004 Ford  
Crown Victoria Meter Reading





2011  
Compactor





2011  
Canister A / Trash





2011  
Canister B / Trash





Year ???? OLD  
Canister C&D / Paper





Year ???? OLD  
Canister E&F / Recyclables